

# GRIPPEX® MINI

## Bar Puller and Pick-up Unit for small-size Lathes and Machining Centers

- STATIONED AT THE TURRET OR TOOL MAGAZINE
- DRIVEN BY COOLANT
- CONTROLLED BY THE NC-PROGRAMME

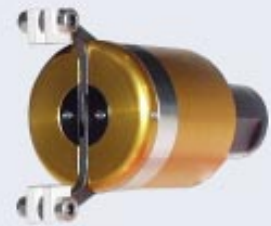
### Use Grippex MINI in a Lathe

*as a Bar Puller* - self adjustable within the whole gripping range makes it possible to grip material on different diameters - it grips very close to the chuck!  
*equipped with robot fingers and jaws* - for example when unloading finished parts safely from the Sub-spindle.



### Use Grippex MINI in a Machining Center

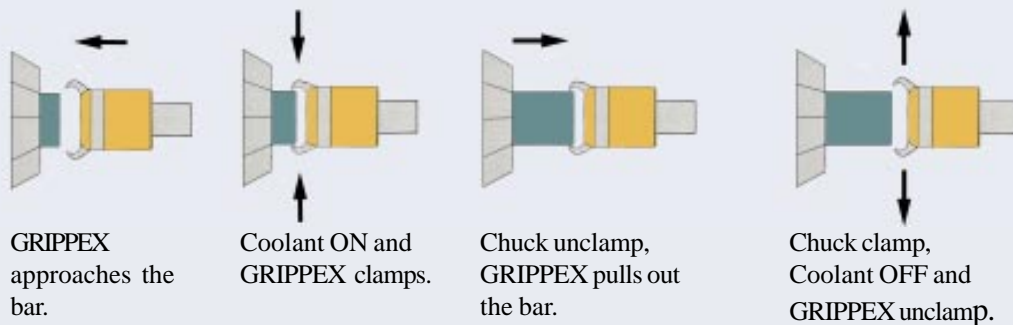
*as a Robot* - mounted on a Milling chuck with internal coolant supply, Grippex can load/unload workpieces into/out of M-code-controlled vices, chucks and rotary tables from/to a work piece storage. Grippex Mini can be stored in the tool magazine, and the adjacent tool positions need not be vacated.



### Advantages

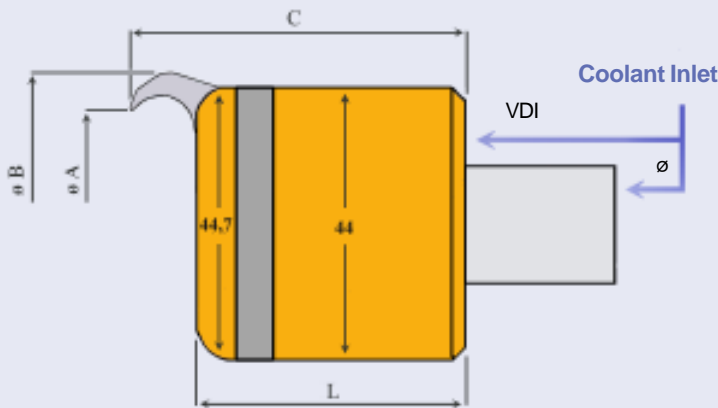
- Instant setup - gripping is secured without any adjustment within the whole gripping range.
- The fingers and jaws are easily exchangeable.
- The 2-finger type is very useful when pulling/gripping square, rectangular and irregular profiles such as cast profiles.
- Easy programming:
  - Coolant **ON** for Grippex to clamp.
  - Coolant **OFF** for Grippex to unclamp.

### Programming example for Bar-Pulling on Lathes



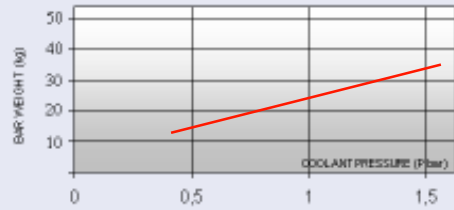
# Specifikations

## GRIPPEX® MINI



		L
Straight Shank	Directly fitted on the back plate	49.50 mm
VDI16	Directly fitted on the back plate	49.50 mm
VDI20	Back plate VDI (L+11.80)	61.30 mm

Pulling Force Graph



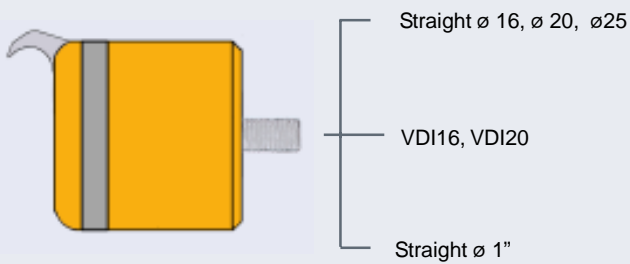
The graph shows the max. allowable weight of a mild steel bar to be pulled at a coefficient of friction valued <0.2

Grippex II Mini stands high pressure - 7 bar

### Dimensions at different gripping ranges

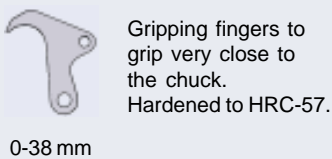
GRIPPING RANGE	ø A	ø B	C
Standard fingers	39 mm	52 mm	61.5 mm
Robot fingers	40 mm	60 mm	70.5 mm

### Available shanks



ORDER CODE	DESCRIPTION
GPX-M/D16	Grippex Mini with ø 16 mm straight shank
GPX-M/D20	Grippex Mini with ø 20 mm straight shank
GPX-M/D25	Grippex Mini with ø 25 mm straight shank
GPX-M/VDI16	Grippex Mini with VDI16 shank
GPX-M/VDI20	Grippex Mini with VDI20 shank
GPX-M/1"	Grippex Mini with 1 inch shank

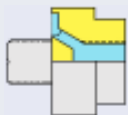
### Gripping fingers



ORDER CODE	DESCRIPTION	CAPACITY
GPX-M/F38*	Grippex Mini gripping fingers	0-38 mm
GPX-M/R38*	Grippex Mini robot fingers	0-38 mm

\*) Order set contains two fingers

### Accessories



Adapter for lathes without internal coolant supply



Robot jaw for robot fingers

ORDER CODE	DESCRIPTION
GPX-M/AD20	Grippex Mini Adapter for ø20mm shank
GPX-M/AD25	Grippex Mini Adapter for ø25mm shank
GPX-M/RJ9*	Grippex Mini Robot Jaws

\*) Order set contains two fingers

Distributed by:



MPC Automation Systems AB  
Box 5879, S-102 40 Stockholm, Sweden  
Phone: +46 8 6670950 Fax +46 8 6670952

Visit us at <http://www.barpuller.com>